

## ***Language Lab***

Language lab is set up in the college because it is not only a place where learners perform language experiments but it is a special lab where language experiments can be practiced by speaking & listening with the help of sound equipments. It recognizes the individual differences and language aptitude of a learner. It is a self learning device, designed in such a manner that a student can practice carefully produced pattern of drills. The college is well equipped with microphones, LCD projector with screen, CPU & many CD's to learn & speak English fluently.



## ***Art & Craft Resource Centre***

A well equipped art & craft resource centre is established in college because canvas is the mode to express the inner feelings of students. It is said that colour speak for themselves. Art is soul of life; creativity is cultured with opportunities extended to the students in many forms. All the possible facilities & opportunities are expended to our Students to engrave their minds & creativity.



## ***Health and Physical Resource Centre***

The college has a fully equipped health & physical resource centre, it provides ample of opportunity for students to indulge in indoor & outdoor sports activities. The students can avail indoor games like chess, carom-board & outdoor games like badminton, volley ball etc. Our Mission is to help, provide students with adequate resources to excel in sports by creating an environment, which imbibes on ethics of sportsmanship.



## ***Classroom Facility***

The Institute has spacious architecturally designed lecture and tutorial rooms. It also has glossy chalkboards and flannel boards all intact, furnished with adequate modern Furniture.

### **Classroom Ethics:**

- ★ Position for teaching learning and Research
- ★ Respects for students
- ★ Deeper understanding
- ★ Clarity of expression/thought
- ★ Fluency of Language
- ★ Discipline



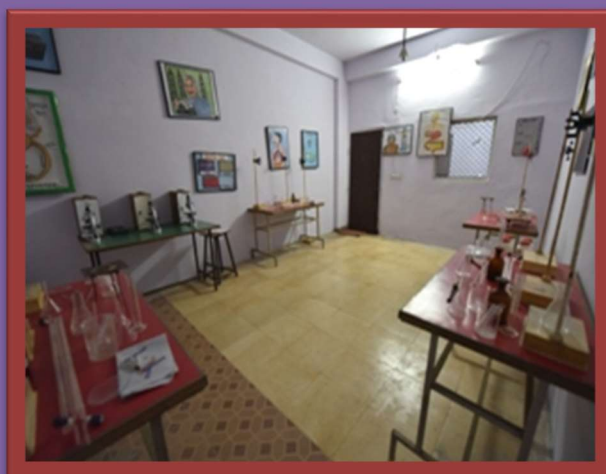
## ***Psychology Centre***

In any scheme of study, there should be a close integration of theory with practice. We can know such things about them through their measurements & this measurement is possible through relevant psychological tests. The college has a separate Psychology Laboratory which has sufficient psychological apparatus, tests, transparencies and CD's which are related to various aspects of human development and teaching learning process for conducting psychology experiments included in the B.Ed. Syllabus.



## ***SCIENCE & MATHS RESOURCE CENTRE***

A well equipped spacious Laboratory with working model to develop a scientific temper charts and specimen. The lab is child friendly and provides a conducive environment. It performs experiment and work on projects. Modern well ventilated laboratory provided with safety device. A child friendly Lab. All experiment & Project work monitored by subject experts



## ***COMPUTER-LABORATORY***

Today's era is computer era. We all know the importance of computers in our daily life. Almost all the departments are working with the help of computers. A well equipped computer lab with facility of internet is available for the students to make them eligible to handle the computer for their technical development



## **E-T-LABORATORY**

The educational technology lab is well equipped with all types of multimedia equipments standing from epidiascope to LCD projector, the lab is recently upgraded with the interactive device with which normal board can be converted into a touch screen . The aspirant teachers are trained to use the multimedia to the smallest hence they can be effective in the class room.



## **SOCIAL-SCIENCE LAB**

In this lab charts, models, globe, pictures, scrap book, model lesson plans, time lines, maps, atlas, rain gauge, measuring instruments, wind wane, drawing material, slides and transparencies of different geographical and historical places are available.



